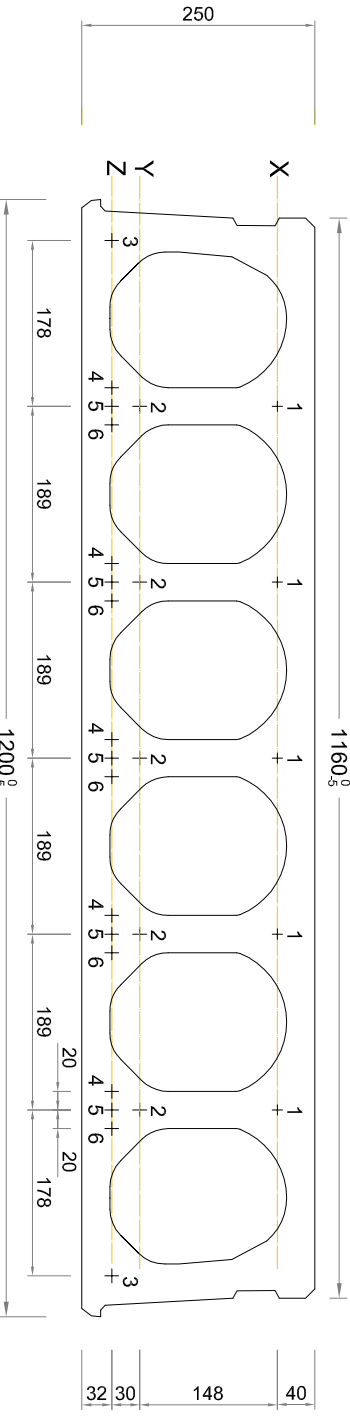
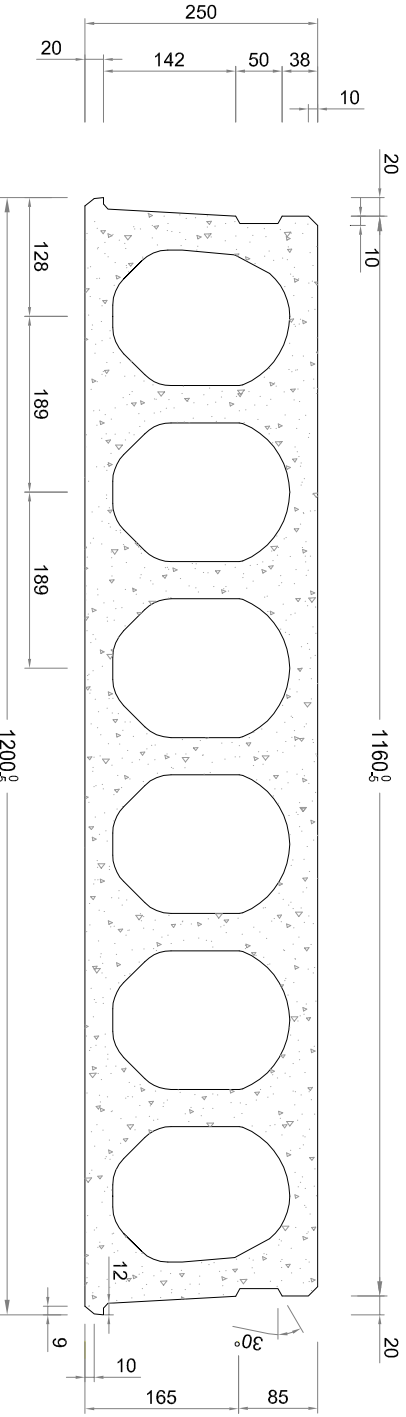


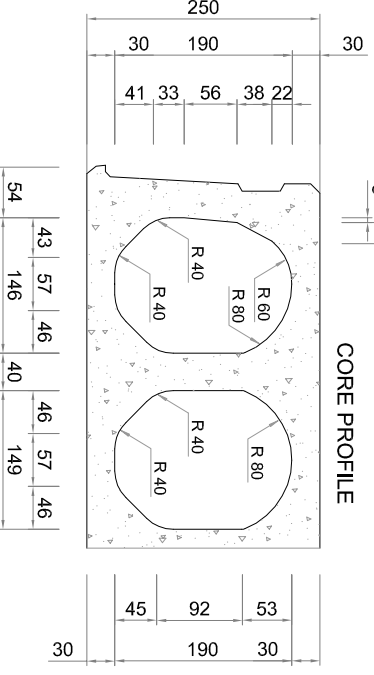
ALL DIMENSIONS IN MILLIMETERS (NO VOT SCALE)



HOLLOW CORE SLAB FOR FLOOR  
250mm high - 6 holes (extruder technology)  
STRAND POSITION



HOLLOWCORE SLAB FOR FLOOR  
250mm high - 6 holes (extruder technology)  
UNIT PROFILE



UNIT DETAILS	
CROSS SECTION AREA m <sup>2</sup>	0.148550
WEIGHT kg/m <sup>2</sup>	299
WEIGHT kg/m	359
VOID/SOLID RATIO	50%
STRAND DETAILS	
Level	Strand Diameter
X	9.3mm
Y	9.3mm
Z	9.3mm - 12.5mm (Pos. 3 suggested 9.3mm)
3 - 5 - 6	9.3mm - 12.5mm (Pos. 3 suggested 9.3mm)

ORANMORE PRECAST LTD HC FLOOR NOTES:

- ALL UNITS TO BE DESIGNED, MANUFACTURED & ERECTED IN ACCORDANCE WITH BS8110 & EN198.
- CONCRETE GRADE C40/50 STRAND COVER 25mm DURABILITY MODERATE FIRE RESISTANCE TYPE A DESIGN SERVICEABILITY CLASS 2
- SERVICE OPENINGS**- PREFORMED HOLES / CUT OUTS ARE TAKEN TO THE CENTER OF THE NEAREST CORE. IN SOME CASES THE HOLE CUTOUT MAY BE GREATER THAN SHOWN ON THE DRAWING. PLEASE SERVICE OPENINGS UP TO 50% OF THE HOLE DIAMETER. THE CENTER LINE OF THE CORES BY OTHERS. TO AVOID SPALLING OF THE SHOULDER, REINFORCEMENT SHOULD COMMENCE FROM BOTTOM UP. CARE SHOULD BE TAKEN TO PRESERVE THE STRAND SLAB AND BE CUT OFF FROM THE STRANDS. CARE SHOULD BE TAKEN TO PRESERVE THE LARGER OPENINGS/NOTCHES WITHOUT FIRST CONSULTING WITH ORANMORE PRECAST LTD. DESIGN OFFICE. STEEL TRIMMER HANDBOOK CAN BE SUPPLIED FOR LARGE OPENINGS WHERE REQUIRED.
- BEARING UNITS** ARE TO BE LAID ON A LEVEL BEARING OF NOT LESS THAN 100mm OF SAND OR 75mm OF STEEL OR TO CONCRETE. LEVEL BEARING SURFACES & MUST BE ERECTED IN GOOD TIME, BE SUITABLY CURED BEFORE INSTALLATION OF HC UNITS. THE DESIGN OF THE SUPPORTING ELEMENTS IS THE RESPONSIBILITY OF THE CONTRACTOR. THE CONTRACTOR SHALL BE RESPONSIBLE FOR THE MUST BE PUT IN PLACE WHERE SIDE BEARING OCCURS IN ORDER TO TRANSMIT EXCESS LOADINGS ON TO FOUNDATIONS.
- GROUTING & FINISHES** - JOINTS BETWEEN UNITS MUST BE GROUTED UP WITH CONCRETE OR SAND CEMENT MORTAR (CONCRETE GRADE C25/30) BY THE MAIN CONTRACTOR. THE GROUT MATERIAL SHALL BE COMPACTED INTO THE JOINT FROM THE TOP. THE UNITS MUST BE CONCENTRATED LOAD.
- CUTTING OF UNITS** - UNDER NO CIRCUMSTANCES SHOULD UNITS BE CUT WITHOUT FIRST IN CONSULTING OUR DESIGN OFFICE.
- LIFTING & LIFTING** - SLAB MUST BE LIFTED AT OR NEAR THE ENDS. LIFTING AT THE CENTER WILL CAUSE BREAKAGE AND ORANMORE UNITS WILL BE DAMAGED. UNITS MUST BE LIFTED BY THE CONTRACTOR. THEY MUST BE SUPPORTED APPROX. 300mm FROM THE ENDS AND SUITABLE TIMBER SKIDS MUST BE USED. **CRIPPLE AND/OR LIFTERS** WILL BE PROVIDED TO PC UNITS WHERE REQUIRED AND CATED UNITS WILL ON O.A. UNITS ONLY.
- A PRECAMBER OF APPROXIMATELY LENGTH/300 (+/- 25%) CAN BE EXPECTED ON ALL PRESTRESSED FLOORING UNITS.

REV	DATE	BY	DESCRIPTION
A	29.04.16	DD	FOR INFORMATION ONLY

DWG STATUS: **FOR INFORMATION**

SCALE: NTS DATE: 29.04.16 REV: NC: A

DRAWN BY: DD CHECKED: SS DRAWING NO: 250

ORANMORE PRECAST LTD 2012

www.oranmore.co.uk

**ORANMORE PRECAST** Fax: 01 842 819580  
 Mulford road, Weeting, Norfolk, IP27 0PL  
 Phone: 01 842 819588  
 Email: info@oranmoreprecast.com

TITLE: HOLLOWCORE DATA SHEET

DRAWING: 250mm HOLLOWCORE PROFILE